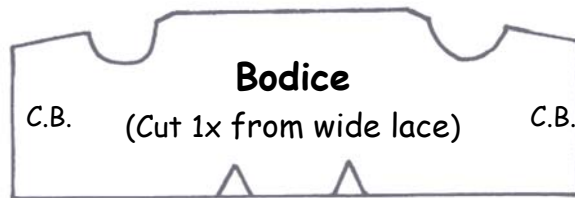
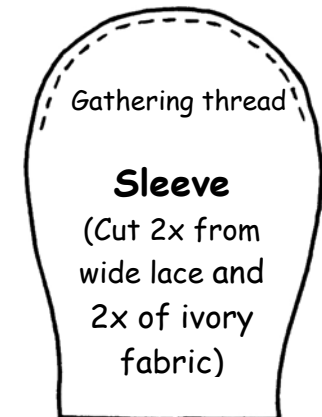
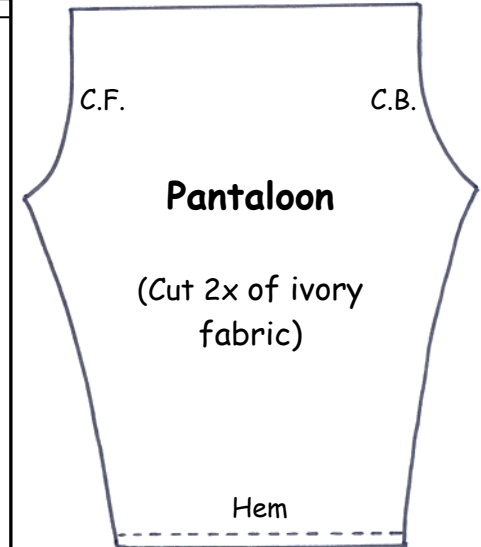
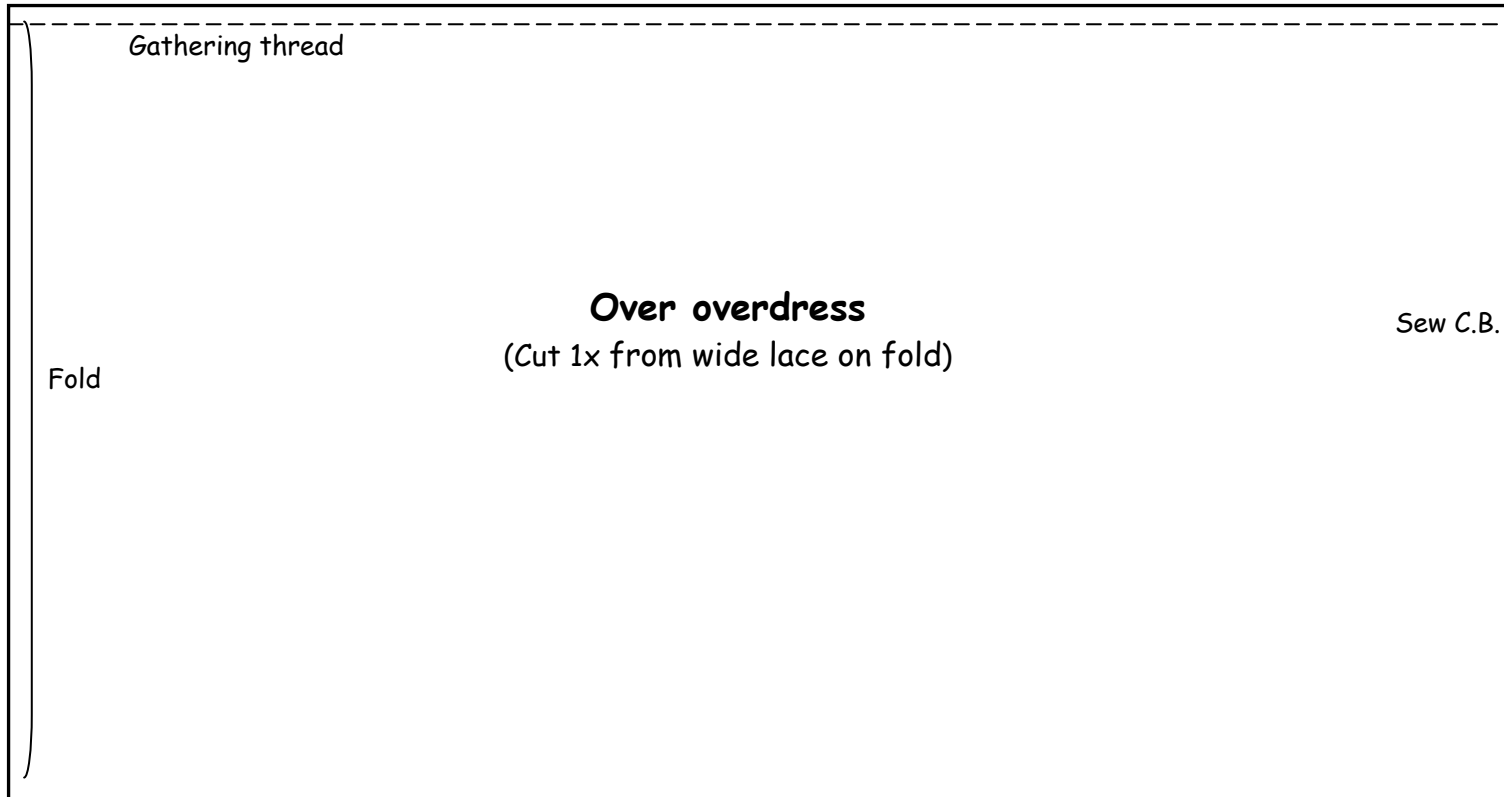
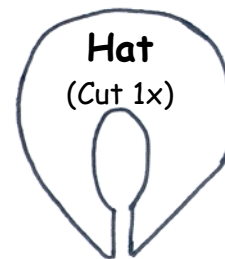


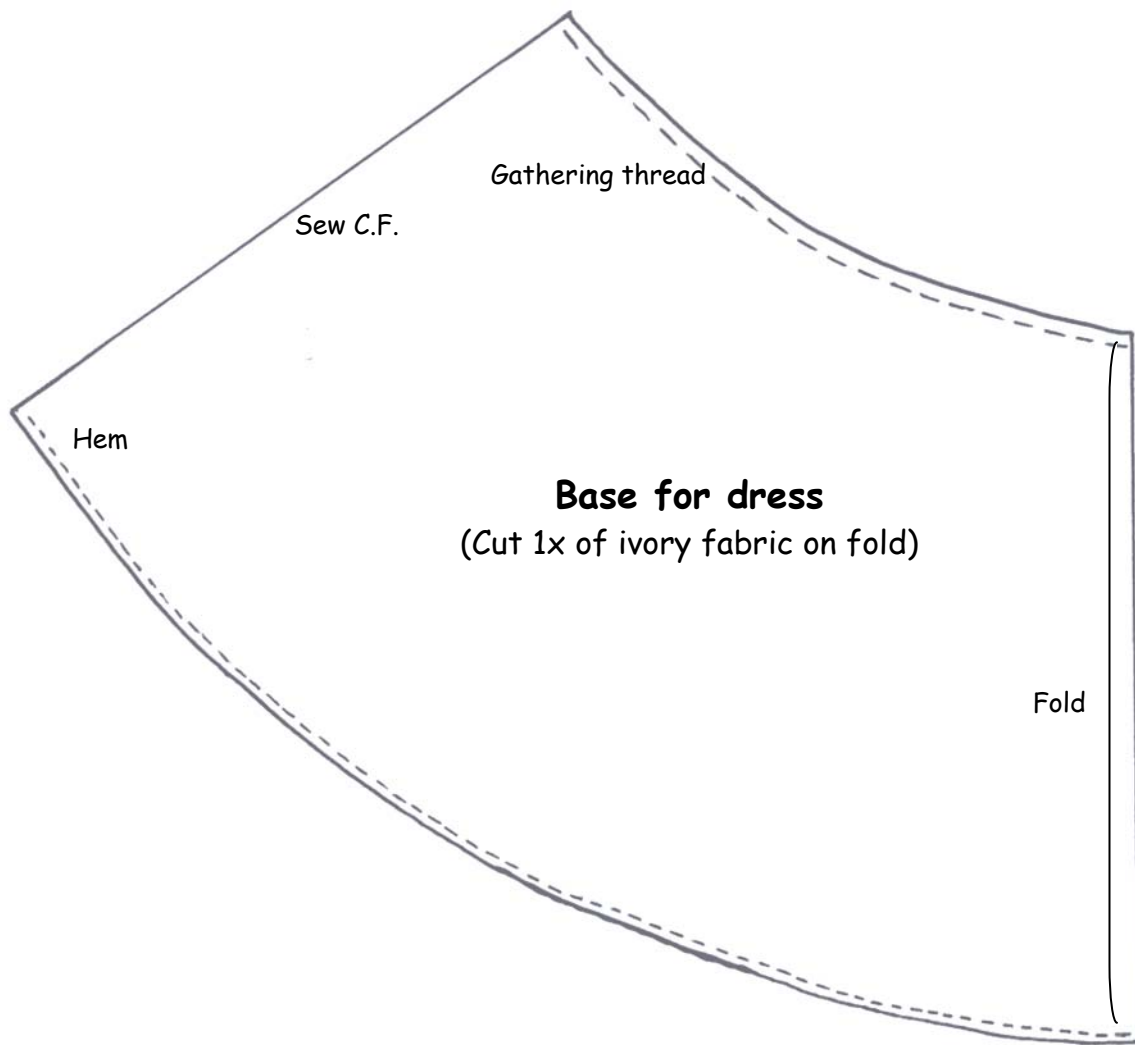
# Maggy

## Fashion Dolls in Miniature



Base for bride bouquet  
(Cut 1x)





**Legend:**

Over overdress = Bovenkleed van de jurk

Base for dress = Basis voor de jurk

Pantaloen = Onderbroek

Sleeve = Mouw

Bodice = Bovenlijfje

Hat = Hoed

Finishing neck line of bodice = Afwerking van de halslijn

Cut from wide lace = Knip dit uit de brede kant

Cut from ivory fabric = Knip uit de ivoorkleurige stof

Base for bridal bouquet = Basis voor bruidsboeket

Sew = Naaien

Cut = Knip

Gathering thread = Rimpeldraad

Fold = Stofvouw

Hem = Zoom

Center back = C.B. = Midden achter

Center Front = C.F. = Midden voor

